



DT Series

DUal-MPPT Three-Phase

10kW/12kW/15kW/17kW/20kW

Case Study: GoodWe three-phase inverters in commercial projects



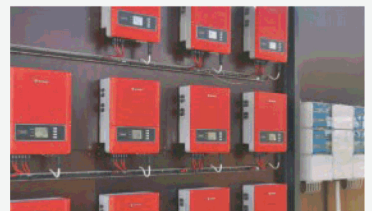
Location: Rooftop of Canadian Solar's factory
Capacity: 1.2 MW
Inverter: 53 x GW17K-DT, 20 x GW15K-DT



Location: Rooftop of Panasonic factory
Capacity: 430 KW
Inverter: 14 x GW17K-DT, 12 x GW15K-DT



Location: Industrial park in Suzhou, China
Capacity: 967 KW
Inverter: 32 x GW17K-DT, 15 x GW15K-DT



Location: UK National Coal Mining Museum
Capacity: 51kW
Inverter: 3 x GW17K-DT



Location: Solar Farm, Gloucester, UK
Capacity: 58kW
Inverter: 4 x GW17K-DT



Location: Solar Farm, Denmark
Capacity: 200kW
Inverter: 11 x GW17K-DT

WHERE THE SUN SHINES, THERE IS GOODWE.

Technical Data

	GW10K-DT	GW12K-DT	GW15K-DT	GW17K-DT	GW20K-DT
DC Input Data					
Max. DC power [W]	10200	12300	15400	17500	20500
Max. DC voltage [V]	1000	1000	1000	1000	1000
MPPT voltage range [V]	260~850	260~850	260~850	260~850	260~850
Starting voltage [V]	250	250	250	250	250
Max. DC current [A]	22/11	22/11	22/22	22/22	22/22
No. of DC connectors	4	4	6	6	6
No. of MPPTs	2	2	2 (can parrallel)	2 (can parrallel)	2 (can parrallel)
DC connector			SUNCLIX / MC4 (optional)		
AC Output Data					
Norminal AC power [W]	10000	12000	15000	17000	20000
Max. AC power [W]	10000	12000	15000	17000	20000
Max. AC current [A]	17	19	25	25	30
Norminal AC output			50/60Hz; 400Vac		
AC output range			45~55Hz/55~65Hz; 310~480Vac		
THDi			<1.5%		
Power factor			0.9 leading~0.9 lagging		
Grid connection			3W/N/PE		
Efficiency					
Max. efficiency	98.0%	98.0%	98.2%	98.2%	98.2%
Euro efficiency	>97.5%	>97.5%	>97.5%	>97.5%	>97.5%
MPPT adaptation efficiency	>99.5%	>99.5%	>99.5%	>99.5%	>99.5%
Protection					
Residual current monitoring unit	Integrated	Integrated	Integrated	Integrated	Integrated
Anti-islanding protection	Integrated	Integrated	Integrated	Integrated	Integrated
DC switch	Integrated (optional)	Integrated (optional)	Integrated (optional)	Integrated (optional)	Integrated (optional)
AC over current protection	Integrated	Integrated	Integrated	Integrated	Integrated
Insulation monitoring	Integrated	Integrated	Integrated	Integrated	Integrated
Certifications&Standards					
Grid regulation	VDE-AR-N 4105, G59/3 AS4777.2&.3, IEC62109-2 VDE0126-1-1+A1 EN50438, RD1699 MEA, PEA, NRS097-2-1	VDE-AR-N 4105, G59/3 AS4777.2&.3, IEC62109-2 VDE0126-1-1+A1, RD1699 EN50438, NRS097-2-1	VDE-AR-N 4105, G59/3 AS4777.2&.3, IEC62109-2 VDE0126-1-1+A1, RD1699 EN50438, NRS097-2-1	VDE-AR-N 4105, G59/3 AS4777.2&.3, IEC62109-2 VDE0126-1-1+A1, RD1699 EN50438, NRS097-2-1	AS4777.2&.3, G59/3, IEC62109-2 VDE0126-1-1+A1 EN50438, RD1699 MEA, PEA, NRS097-2-1
Safety			IEC62109-1&-2, AS3100		
EMC		EN 61000-6-1, EN 61000-6-2, EN 61000-6-3, EN 61000-6-4, EN 61000-3-11, EN 61000-3-12			
General Data					
Dimensions (WxHxD)			516*650*203mm		
Weight [kg]			39		
Mounting			Wall bracket		
Ambient temperature range			-25~60°C (>45°C derating)		
Relative humidity			0~95%		
Max. operating altitude			2000m		
Protection degree			IP65		
Topology			Transformerless		
Night power consumption [W]			<1		
Cooling			Fan cooling		
Noise emission [dB]			<45		
Display			5.0" LCD		
Communication			USB2.0; RS485 or WiFi		
Standard warranty [years]			7/10/15/20/25 (optional)		

- Maximum Efficiency up to 98.2%
- DC switch
- Super large 5-inch LCD
- European Efficiency up to 97.5%
- IP65 dust-proof and water-proof rating
- 30% lighter than similar products
- MPPT Efficiency over 99.5%
- 45°C full-load output
- Multiple monitoring and communication
- up to 800 pieces can be integrated in one system